

GREATER MANCHESTER POLICE



Oldham Borough LPT

District Executive Meeting Police Report

Failsworth, Hollinwood & Limeside

Oldham Division, Local Policing Team

Report Dates 27th September 2017 – 19th November 2017

Prepared by: PS 19035 Paul Archer & O.S.O. 62279 Diane Bradley

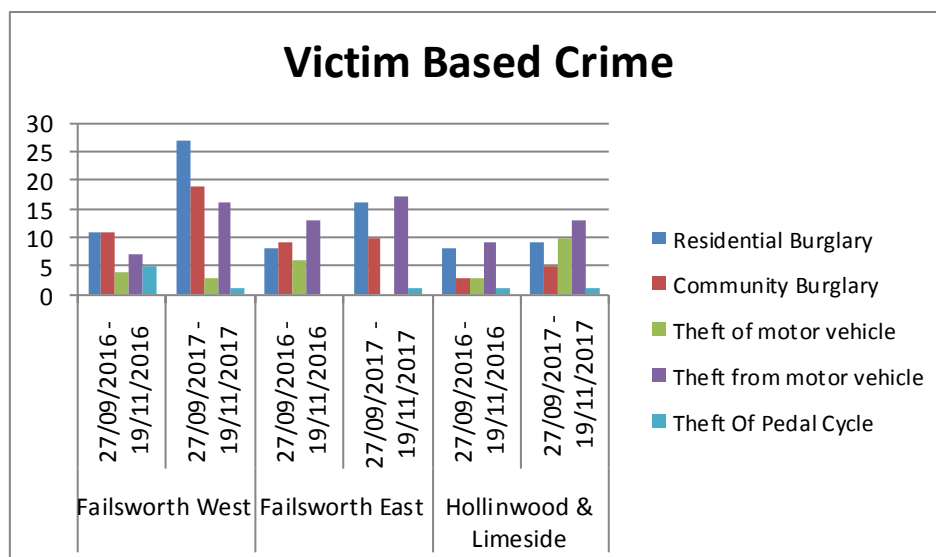
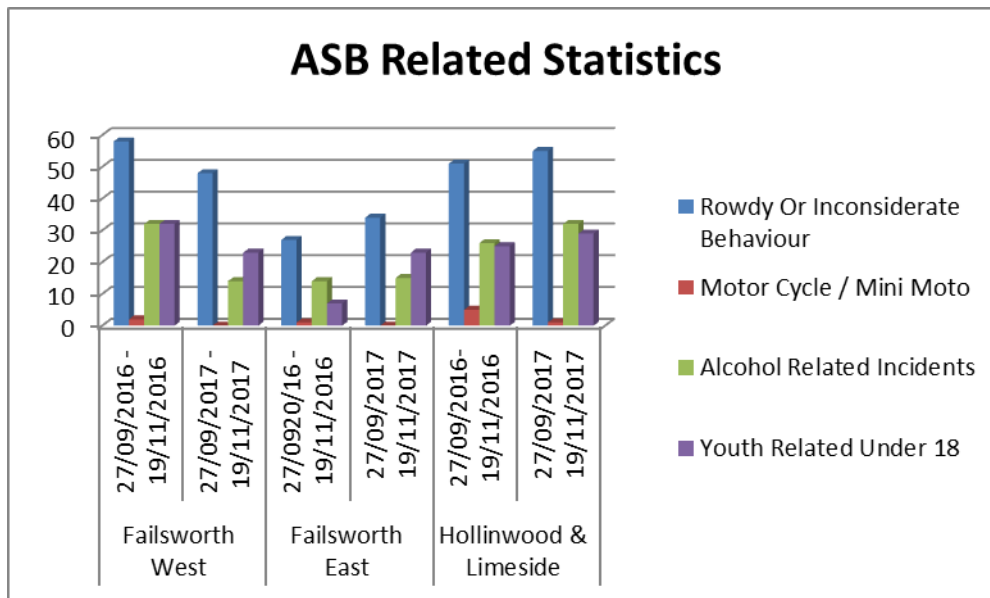
Date: 20th November 2017

Report Dates 27th September 2017 - 19th November 2017

ANTI-SOCIAL BEHAVIOUR

Anti-social behaviour (ASB) includes a range of issues. Behaviour can be anti-social because it is capable of causing nuisance or annoyance to both individuals and the wider community.

REPORT ANTI-SOCIAL BEHAVIOUR BY RINGING 101



On the 1st of April 2017 the way we record Burglaries changed.

The previous categories of 'Burglary Dwelling' and 'Burglary Other than Dwelling' are replaced by 'Burglary – Residential', and 'Burglary – Business and Community'.

Burglary – Residential (Previously Burglary Dwelling) includes:

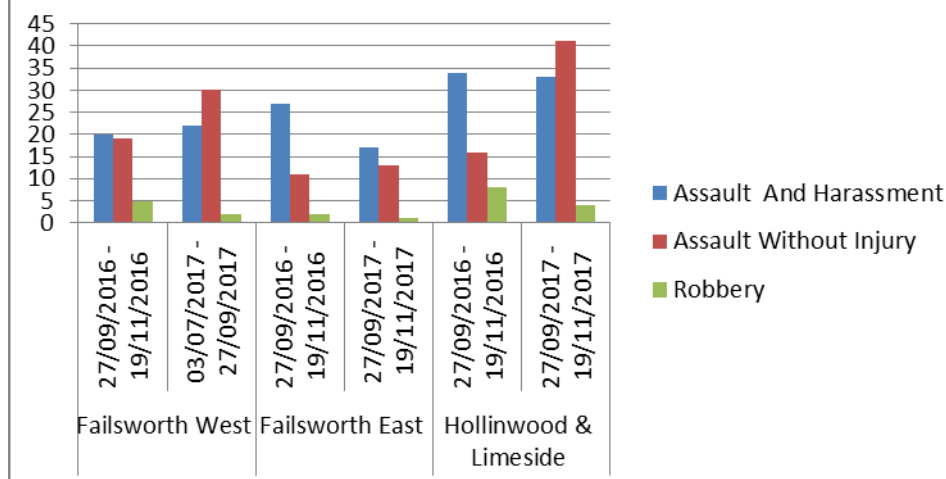
- All buildings or parts of buildings that are within the boundary of, or form a part of, a dwelling;
- The dwelling itself, vacant dwellings, sheds, garages, outhouses, summer houses and any other structure that meets the definition of a building;
- Other premises used for residential purposes such as houseboats, residential care homes and hostels;

Burglary - Business and Community (Previously Burglary Other) includes:

- All buildings or parts of buildings that are used solely and exclusively for business purposes or are otherwise entirely outside the classification of residential burglary such as a place of worship;
- Where an outbuilding is within the boundary of a dwelling, but not forming part of the dwelling building, such as a garage or workshop and is used solely for business purposes.

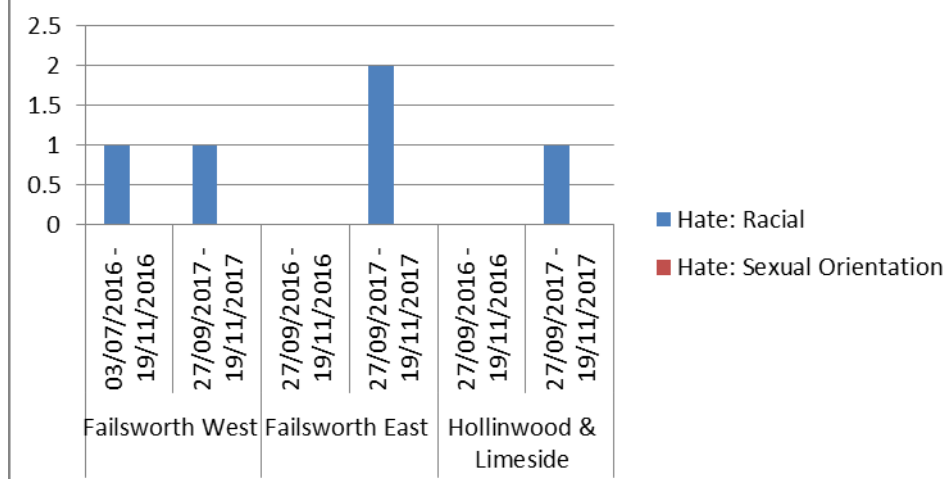
Prior to the 1st April 2017 sheds, garages, outhouses, summer house, houseboats, residential care homes and hostels etc. were recorded as Burglary Other.

Violent Crime Statistics



Violent crime - Assault and Harassment figures now also include Malicious Communications, Dangerous Dogs and Fear of Violence

Hate Crime Statistics



Hate crimes are any crimes that are targeted because of hostility or prejudice in relation to: Disability, race or ethnicity, religion or belief, sexual orientation transgender identity

.A victim does not have to be a member of the group at which the hostility is targeted. In fact, anyone could be a victim of a hate crime. This can be committed against a person or property.

Suspicious Circumstances (Ring 101) immediately

Between 27th September 2016 and 19th November 2016 we received **80** reports from the residents of Failsworth, Hollinwood and Limeside of suspicious circumstances.

Between 27th September 2017 and 19th November 2017 we received **70** reports from the residents of Failsworth, Hollinwood and Limeside of suspicious circumstances.

REPORT SUSPICIOUS CIRCUMSTANCES BY RINGING 101

HELP US TACKLE ANTI-SOCIAL BEHAVIOUR

Anti-social behaviour (ASB) includes a range of issues. Behaviour can be anti-social because it is capable of causing nuisance or annoyance to both individuals and the wider community.

Within the Failsworth, Hollinwood & Limeside we have a strong partnership approach to tackling ASB and the causes of it preventing it from reoccurring. This partnership approach includes police, local authorities and social landlords. These agencies have wide ranging powers to effectively tackle this problem.

RECENT ISSUES OF NOTE:

- Wheelie bins being set on fire behind the shops on Partington Street.
- Youths throwing fireworks around Failsworth, Hollinwood & Limeside including Limeside Park.
- Youths throwing stones at taxis Pole Lane/Ashton Road West.
- Fires and fireworks being thrown at Limeside Park, resulting in two young people being injured.
- Ram Raids at various convenience stores throughout Failsworth, Hollinwood and Limeside.

HOT SPOT AREAS:

- Failsworth Higher Memorial park and the retail zone
- Rear of the shops on Partington Street
- Grounds of St Johns Church, Oldham Road.
- Metrolink on Slater/Hudson Street in Hollinwood
- Limeside Park
- Asda, Hollins Road, Hollinwood
- Oasis Academy Oldham, Hollins Road

SEASONAL THREATS

- **Burglary Dwellings and insecure property.** Please remember to lock up your house, garage, shed, greenhouse and outbuildings Consider putting vibration alarms on patio doors and windows entry can be gained by smashing a glass door panel or window pane.
- **Vehicle Crime.** Please do not leave vehicles unattended with the keys in the ignition while you defrost the car. Every year we have numerous reports of opportunistic thieves stealing vehicles left this way.

FAILSWORTH, HOLLINWOOD & LIMESIDE PRIORITIES:

We're working hard to tackle crime and anti-social behaviour to make your area a safer place to live and work. Here are the priorities we are currently tackling in your area: Priorities are reviewed regularly and correct as of 17th November 2017.

Failsworth East:

What: Anti-social behaviour

Where: Higher Memorial Park, Lower Failsworth Park and the surrounding area and streets including Cooke Street, Church Street and Ravenoak.

When: Mainly Thursday, Friday, Saturday and Sunday evenings.

In response: High visibility patrols will continue and a joint partnership approach is being used to resolve these issues and to try to identify ASB offenders

What: Anti-social behaviour

Where: Around the Hollinwood Metro Link via Tweedale Way, Hudson Street and surrounding streets

When: Various times daytime, evening and nights and weekends

In response: We will carry out high visibility patrols to resolve these issues and to try to identify antisocial behaviour offenders

Failsworth West:

What: Antisocial Behaviour

Where: Failsworth Retail Area & Quay

When: Mainly Friday & Saturday evenings 5pm onwards

In response: High visibility patrols continue and a joint partnership approach is being used to resolve these issues and to try to identify ASB offenders.

What: Youths causing annoyance at the Metro link

Where: Between Hardman Lane Tram stop and Hollinwood tram stop.

When: Mainly Friday & Saturday evenings 5pm onwards

In response: We continue to address the issue by carrying out high visibility patrols and working with partner agencies to try to identify ASB offenders.

Hollinwood and Limeside:

What: An increase in antisocial behaviour on the 3G pitch

Where: 3G pitch - Oasis Academy Oldham - Hollins Road

When: Various days and times including weekends

In response: High visibility patrols continue and a joint partnership approach is being used to resolve these issues and to try to identify ASB offenders

What: The increase in vehicle nuisance including abandoned vehicles and vehicles being driven without tax and / or insurance

Where: Various streets and locations on Limeside

When: Various days and times including evenings and weekends.

In response: High visibility will continue to help resolve the problems and identify the offenders.

What: An increase in antisocial behaviour

Where: Hollins Road

When: Various days and times including early afternoon evenings

In response: We are carrying out high visibility patrols and working with partner agencies including local schools.

Changes and moves in Failsworth, Hollinwood & Limeside



We welcome Inspector Stewart Wilson as the inspector for Failsworth, Hollinwood & Limeside

Inspector
Stewart Wilson



Neighbourhood Beat Officer Steve Bennette has moved onto pastures new.

NBO Steve
Bennett

SIDE WALK TALK – FIRST FOR GREATER MANCHESTER POLICE

Failsworth held a 'Sidewalk Talk' event at Tesco Failsworth. Side Walk Talk are a group of volunteers (adults) who are psychotherapists, counsellors and counselling degree students who recently formed the first Sidewalk Talk group in the UK. (It is not mandatory for Sidewalk Talk volunteers to be counsellors – anyone who has an interest in contributing to the wellbeing of others within their community may join. It just happens that this first group in the UK are all from a therapeutic background).

They **DO NOT** offer counselling to people, they are just **LISTENING**. They don't give advice or make judgements, they listen with empathy. They want to promote a sense of community, of belonging and caring. They believe that when we take the time to listen, we generate a sense of connection to others which contributes to positive mental health. When people need additional support services, Side Walk Talk signpost people to local organisations such as the Citizen Advice Bureau and Mental Health Services.

The event involved taking chairs out into the community and inviting members of the public to just sit and talk - about anything they choose. They have also found that people are just as happy to stand and talk to them. They don't impose what they are doing on others – they wait for them to come to them and then explain what they are doing. They believe that they bring a sense of calm to a busy, noisy environment.

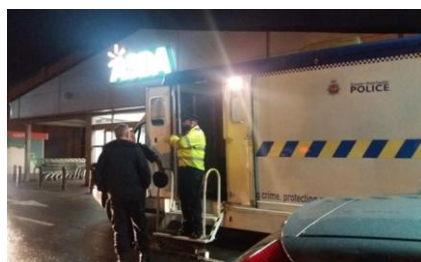
This was the first time that the non-profit community listening project, Sidewalk Talk had worked alongside a UK Police service. The positive feedback and interaction with the members of the community was great and hopefully provided the help and direction people wanted.

A big thank you to the Sidewalk Talk volunteers, Road Safety Team and Tesco for helping us run a unique community listening event in Failsworth.



FIREWORK SAFETY / CRIME PREVENTION ADVICE ROADSHOWS

The mobile police station has been located at various locations around Failsworth, Hollinwood and Limeside providing reassurance and crime prevention advice. We have received positive feedback from the community and the residents that called in and had a chat.



Darker Nights



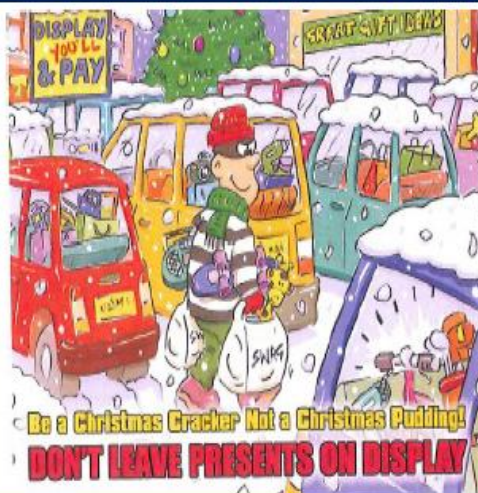
SEASONAL RISKS:

At various times of the year we see a spike in certain types of crime and there are things you can do to prevent this, help us to help you.

It is getting darker earlier so please prepare your home for darker nights by following these simple steps.

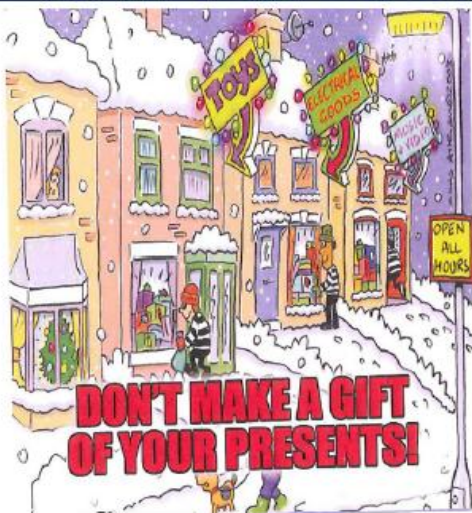
- Use a light timer when out to give the impression someone is at home.
- Set the alarm when you go out night or day especially when you are in bed.
- Lock all windows and doors even when you are at home.
- Close your curtains if out when your timer lights comes on.

Winter Crime Prevention



Don't let a thief ruin your Christmas follow these simple steps to protect your valuables:

- If you must leave things in the car make sure they are locked away out of sight and leave your most expensive purchases until last.
- Remember to shut and lock doors and windows when leaving your vehicle and NEVER leave keys in the ignition
- Portable car stereos and SAT NAV's are tempting items to steal so be sure to remove them when you leave your car
- Never leave valuables such as bags, mobile phones and coats clearly on display. Even a coat or plastic carrier bag left on a back seat can attract a thief
- Steering wheel locks and immobilisers are a good way of deterring thieves



- Put presents under the tree as late as possible or keep your tree out of view of the window.
- Make sure all your door and window locks are secure and don't forget to use them.
- Hall tables are a burglars dream, full of keys, money, phones and other valuables. Keep all such items well out of sight and range of doors and windows – thieves use rods and hooks through letter boxes and open windows to reach keys and bags.
- Don't let burglars window shop – keep presents out of sight from outside your home, security mark valuable gifts before you wrap them and if you hide gifts in sheds or garages be sure the locks and windows on these buildings are secure.
- If you are planning to go away use timer switches for lights and ask a neighbour or friend to keep an eye on your home.
- Empty boxes left outside are an advert for the new goods inside – dispose of packing carefully.



Don't be a victim! Here are a few simple tips to ensure a great night out

- Don't carry large amounts of cash
- Don't leave bags over the back of chairs
- Don't get involved in arguments in the street
- Only use pre booked private hire vehicle
- Drink sensibly, drunk people are easy targets for thieves
- Make sure someone knows where you are going and when you will be back
- Don't leave drinks unattended
- Don't drink and drive