

CABINET

Youth Delivery in Oldham

Portfolio Holder: Councillor Barbara Brownridge, Cabinet Member for Neighbourhoods and Co-operatives

Officer Contact: Colette Kelly, AED Neighbourhoods
Ext 3103

Report Author: Elaine McLean, Executive Director Neighbourhoods
Ext. 4079

September 2014

Reason for Decision

This paper follows the Cabinet decision in November 2013 to commission all the functions currently delivered within Integrated Youth Service (IYS).

Since then we have worked closely with third sector partners, members and service providers as part of a wider budget options process looking at services delivered across the whole 0-19 age group. As a result of these discussions, we are now in a position to propose three viable options to members on the future delivery of youth and sports services for young people in Oldham.

Recommendations

Members are recommended to agree:

1. Option two as set out in para 3.2 of the report.
2. To enter into formal consultation on the preferred option.
3. That a further report be brought back to Cabinet following the consultation

Youth Delivery in Oldham

1 Background

- 1.1 In November 2013 a paper was brought to Cabinet seeking approval to begin a commissioning process to decide the future model for youth delivery. This commissioning process has been undertaken alongside the development of a Youth Outcomes Framework. Throughout the process we have taken the opportunity to engage with key stakeholders including staff, Overview and Scrutiny, the Youth Council and key local partners.
- 1.2 As a result of these conversations we are now able to offer members three viable options for the future of the youth service as detailed in section 3. The options are set in the context of a required saving by the service of £600k in 2015-2016.

2 Current Position

- 2.1 Oldham Council's Integrated Youth Service (IYS) currently delivers the following universal services:
- District Youth and Sport Delivery
 - Support to the Youth Council
 - Detached Youth Services
 - Empowerment and Participation Team (including Duke of Edinburgh)
 - Schools Swimming
 - School Sports
 - Outdoor Education
 - Study Support
 - Music Service
- 2.2 In 2010 several services that are traded mainly with schools came together to form the IYS Business Unit. They include;
- School Swimming
 - School Sports
 - Study Support
 - Outdoor Education
 - Music Service

- 2.3 We have already mapped and discussed with Members at a district level the considerable activity delivered by community groups and the third sector that we will continue to support. This mapping is attached at appendix 1.
- 2.4 In addition to the universal services delivered through IYS, there is also in Oldham targeted Youth provision. This is currently delivered by Positive Steps Oldham and the activities relate to statutory Ministry of Justice undertakings as part of the Youth Offending Service. These targeted services will continue to form part of the wider 0-19 commission in 2015/16.
- 2.5 It's key to note that the Youth Council will move into the Civic Centre. This reflects the ambition to embed the Youth Council more fully in the governance of the borough. Staff support will be reduced but remain within the Council.

3 Options/Alternatives

3.1 Option 1: To decommission the Integrated Youth Service entirely, keeping only Mahdlo current provision

- 3.1.1 In this option a £600,000 saving is made from both district and central youth delivery. The £400k subsidy to Mahdlo is maintained and Mahdlo will continue to deliver a town-centre youth offer. This option will see Youth Centre buildings close as discussed with members through the District Asset Review

This option is not recommended

3.2 Option 2: To extend the contracts of existing third sector partners to widen their scope.

- 3.2.1 In this option we will extend the contracts of key third sector partners Mahdlo and OCL to take on a greater role. There are several components to this option;
- 3.2.2. A District youth offer is currently delivered by Mahdlo as well as their current town centre offer. Mahdlo will continue develop the district offer by working with the local voluntary and community sector within each district as is written into their existing funding agreement.
- 3.2.3. Achieving the savings target will require the disestablishment of the council teams that deliver a youth and sport offer in the districts.
- 3.2.4 The 6 Council Youth Development staff will be seconded to Mahdlo for 12 months to ensure smooth transition to the new arrangements. The budget for this will remain with the Council.
- 3.2.5 We will also conduct a 12 month pilot seconding the Detached Youth Team to Mahdlo. The budget for this will remain with the Council.

- 3.2.6 The current borough empowerment and participation team will be reduced and the youth work support for the Youth Council and Looked After Children Council brought together. This team will also retain administration for the Council's Duke of Edinburgh Award licence.
- 3.2.7. The Youth Council will transfer into the Civic Centre to align their role more fully with the democratic governance arrangements of the Council.
- 3.2.8. Work will continue in developing the new Cultural Trust and the Music Service will be considered within the business planning processes.
- 3.2.9. School Swimming Service will transfer to OCL
- 3.2.10 Staff from the IYS business unit have expressed a keen interest in forming a mutual to trade with schools across the Borough and beyond. This would include services relating to School Sports, Study Support and Outdoor Education. The mutual would be supported and affiliated to OCL.

We believe this option is the most secure way to ensure key aspects of youth and sports activity are delivered sustainably by our third-sector partners while allowing us to reduce the service budget in line with projected funding pressures. By strengthening the third sector element of the delivery we aim to make it more self-sustaining and viable for the future and reduce the ongoing Council.

- 3.2.11 As part of the delivering a Co-operative Borough we have been working with a collective of third sector organisations to examine how the sector can work closer with the Council in future commissioning arrangements. This collective, called 'Society Works' includes OCL and Mahdlo. If this option were to be approved it would form a blueprint to inform future activity through Society Works.
- 3.2.12 This option may see some Youth Centre buildings close as discussed by members through the District Asset Review; however we would contractually oblige Mahdlo to deliver a district offer from key identified locations in each district. These could be youth centres or community assets such as Churches and local tenant and resident halls, or retained council buildings such as Fitton Hill Neighbourhood Centre.
- 3.2.13 This option will generate savings of £600,000 in 2015/16.

If this option is approved we will continue to work with members in developing a mapping of what the youth and sport offer will look like in each District alongside a detailed project plan setting out transition arrangements, impact on assets and a detailed tailored communications plan.

- 3.2.14 This option is the preferred option

3.3 Option 3: To decommission the district youth offer, keeping the central Business Unit and Mahdlo youth zone.

- 3.3.1 In this option the Council would retain the traded services under the IYS Business Unit. The £400k subsidy to Mahdlo is maintained and they will deliver their current town-centre and outreach offer in Districts. This option will see some Youth Centre buildings close as discussed by members through the District Asset Review.
- 3.3.2 It is important in this option to note that the IYS traded services do contribute a significant amount to council on-costs and back office functions. That said there is significant opportunity to increase third sector sustainability and reduce our subsidy to these organisations if we were instead to transfer these services over.
- 3.3.3 This option will result in a saving of £282,600.

This option is not recommended

4 Preferred Option

- 4.1 The preferred option is Option two. In this option we will extend the contracts of existing providers to encompass a broader range of services that are currently delivered within the Council and enable a staff mutual.

5 Consultation

To date discussions have taken place with staff, District Executives and the Youth Council. The project has also been considered by Overview and Scrutiny who have made recommendations to Cabinet.

- 5.1 If the preferred option is approved, a detailed communication plan will be drawn up with dates for key messages to staff, residents and partners. This will be in line with the Council's Communication and Consultation Approach – the Co-operative Contract.

6 Financial Implications

- 6.1 The current available budget within 2015-16 for the provision of a Youth Service is £2,073k following a reduction for the £600k for the saving NEIGH 13 308 Review of District Assets and Resources identified during the 2014-15 budget process and that has been deferred to 2015-16 in the 5 March 2014 Council budget report.

- 6.2 Table 1 provides a summary of the options to achieve the savings required. The figures detailed exclude central support service recharges, capital depreciation and corporate landlord budgets.

Table 1 Summary of Options

Potential savings 2015-16

- Option 1 To decommission the IYS entirely keeping only Mahdlo- £600,000
Option 2 To Extend the contracts of existing third sector partners - £600,000
Option 3 To decommission the District youth offer keeping the central business unit & Mahdlo - £283,000

- 6.3 It should be noted that Option 3 does not produce the required savings for the service to operate within budget.
- 6.4 It may be possible to generate additional savings in future financial years dependent on the delivery decisions regarding the short term service provisions detailed in paragraph 4.2.
- 6.5. A review of the buildings the Youth Service occupies is currently underway. Until the buildings are leased out, sold or demolished, an element of running costs will still be incurred hence the exclusion at this stage of Corporate Landlord property costs.

(Jenny Howarth/Sadrul Alam)

7 Legal Services Comments

- 7.1 The proposals are within powers. (Bill Balmer) As the proposals develop engagement with Human Resources and Legal Services will be required to ensure that such proposals proceed in accordance with the Council's policies and procedures and that any legal requirements in relation to collective consultation and/ or TUPE Regulations are complied with. (Colin Brittain)

8. Co-operative Agenda

- 8.1 Oldham has an excellent youth offer across the borough. This is largely delivered by the voluntary, community and faith sector with the council often acting as an enabler rather than a direct deliverer. If agreement in principle is given to commission the youth service then the commissioning process would be carried out in line with the Council's co-operative ambition to deliver priority outcomes and maximise social value. This would also present the opportunity to work with staff on the development of a mutual business model operating under the auspices of a wider commission.

9 Human Resources Comments

- 9.1 People Services have been consulted on the proposals detailed within the paper. Dependent upon service requirements going forward, TUPE may apply to those staff affected and therefore we must ensure that the obligations under the legislation are met. The approximate number of staff within scope of these proposals is 121 FTE staff across all of IYS.

If the preferred option 2 were to be taken forward 82 FTE staff would be affected as summarized in the table below. Early discussions and written communications with the Trades Unions and staff engagement have been undertaken.

Summary of FTE impact:

2015-16	2016-17	2017-18	Total
FTE - 39	FTE 6	FTE 36.9	FTE 81.9

(Stewart Hindley)

10 Risk Assessments

- 10.1 None

11 IT Implications

- 11.1 None

12 Property Implications

- 12.1 It is noted in paragraph 7.3 that the savings identified in all 3 options relate solely to the youth service, and it is envisaged that the implications on corporate landlord budgets related to the service portfolio will be subject to a separate report.

- 12.2 As noted at paragraph 7.2, should the Youth Service cease to operate and alternate service provision is not commissioned from existing Council owned and funded buildings, budgetary provision will be required to cover the holding costs associated with the vacant buildings. This means that realisation of full potential revenue savings will be deferred. This provision will be required until the building was leased, sold, or demolished.

- 12.3 In addition most of the Council owned and funded buildings currently used to deliver the service, have outstanding repair and maintenance requirements. If any of these facilities become surplus to requirements, and are released there

will be a future 'saving' as, if retained, over time, repair and maintenance liabilities will continue to increase. Conversely, should the facilities be retained, budget provision will be required in future years to address these issues.

- 12.4 Option 2 recommends that the Youth Service withdraw from a number of Youth Centres currently occupied. It notes the potential for alternative commissioned service provision being delivered from, amongst others, existing youth centre buildings. Should any buildings be retained to provide intermittent/occasional usage, as part of a commissioning model, full holding costs would still need to be met from existing budgets.
- 12.5 There is potential to mitigate the implications of this by securing additional private sector occupiers/commissioned service providers such as 2YO providers. Whilst this option is currently being explored, it is as yet uncertain and therefore partial/under usage of assets remains a risk.
- 12.6 In addition, further work is on-going strategically reviewing, alongside services, the implications of current efficiency savings on the corporate estate, with better utilisation of a reduced portfolio which is aligned to a shrinking directly employed workforce, whilst offering facilities for delivery of commissioned services as required.
- 12.7 Reduced direct service delivery usage of some assets also provides opportunities for wider community usage and there is potential for further exploration, subject to existing associated corporate landlord budgets remaining undisturbed. In this regard we would of course need to be mindful of the New Horizons project and potential 'competition'/duplication element this may pose.
(Cath Conroy)

13 Procurement Implications

- 13.1 The transfer of all Swimming Services to the existing OCL contract is in accordance with the original procurement exercise and the contract has scope for additional demand in line with their core delivery model. Therefore there are no procurement implications.
- 13.2 The costs for the additional school swimming services will be met directly by the schools and the school will contract direct. The impact on the Council's OCL contract will be the negotiation of the reduction of subsidy from the Council in light of the potential income generation from this model. Procurement will support the negotiation of the revised commercial model.
- 13.3 The Mahdlo cost model is not changing, although procurement will support the redefining of service deliverables and overall contract amendment.
(Karen Lowes, Head of Strategic Sourcing)

14 **Environmental and Health & Safety Implications**

14.1 None

15 **Equality, community cohesion and crime implications**

15.1 If following the outcome of this paper a full equality impact assessment will be undertaken. No matter what option is taken will still be able to direct the Detached Youth Team in response to changing community tensions. This will be managed through the existing Crime and Community Safety mechanisms.

16 **Equality Impact Assessment Completed?**

16.1 If members agree the recommended option, a full equality impact assessment will be undertaken.

17 **Key Decision**

17.1 Yes

18 **Key Decision Reference**

18.1 NEICO-01-14

19 **Background Papers**

19.1 None

20 **Appendices**

20.1 See below

Youth & Sport – Shaw and Crompton (DRAFT)
The Co-operative Vision

Ward	Venue	Delivery	Next Steps
Shaw and Crompton	Crompton House	Oldham Junior Badminton Club Age 8 – 19 yrs	SDO supporting to become self-sustaining club
	Royton & Crompton School	RSC Basketball Club Age 9 +	SDO supporting to become self-sustaining club
		Friday night football league Age 14-19 yrs	Sports Development led
	Various	Heyside Football Club Boys and Girls Aged 5 +	Continue to support as and when needed
		Shaw Cricket Club Age 11-15 yrs	Continue to support as and when needed
	Heyside Cricket Club	Heyside Cricket Club Boys 8+ Girls 8-13 yrs	Continue to support as and when needed
	Shaw Youth Centre	Snack and Chat Adults (Mondays 1-3pm)	Core Provision YS Staff
		Senior Youth Club 13-19 yrs (Mondays 6.30-9pm)	Core Provision YS Staff
		Senior Youth Club 13-19 yrs (Tuesday 6.30pm-9pm)	Core Provision YS Staff
		Inter Club 8-14 yrs (Wednesdays 3-5pm)	Core Provision YS Staff
		Chill Chat Snack 11-19 yrs (Thursdays 3-5.30pm)	Core provision staff YS Partnership with police funding
		Senior YC 13-19 yrs (Thursdays 6.30-9pm)	Core Provision YS Staff
		Holiday Provision 8 -18 yrs Half Term Summer	Core Provision YS Staff
	Crompton Library	Library Support 4-6pm(Mondays)	1 YS Staff
		Library Support 4-6pm (Tuesdays)	1 YS Staff
	Scout Explorer Unit – Hunger Hill, Kershaw St, Shaw	Activities: Various from arts to camping 14-26 yrs	Do not support these organisations
	Scouts Cubs & Beavers 1 st Shaw Hunger Hill, Kershaw St	Activities: Various from arts to camping Beavers 6–8yrs Cubs 8–10.5yrs Scouts 10.5–14yrs	Do not support these organisations
	Scouts, Cubs & Beavers, 3 rd Shaw St Marys C.E. School, Rushcroft Rd, Shaw	Activities: Various from arts to camping Age: Beavers 6–8 yrs, Cubs 8–10.5 yrs, Scouts 10.5–14 yrs	Do not support these organisations
	Scouts, Cubs & Beavers, 8 th Shaw St Pauls Methodist Church, Rochdale Rd, Shaw	Activities: Various from arts to camping Age: Beavers 6–8 yrs, Cubs 8–10.5 yrs, Scouts 10.5–14 yrs	Do not support these organisations

Youth & Sport – Shaw and Crompton Continuation (DRAFT)
The Co-operative Vision

Ward	Venue	Delivery	Next Steps
Shaw and Crompton	East Crompton St James Shaw, Church Brigade	Y Team Girls 7–10 yrs (Tuesday 7.15 – 8.30) Y Team Lads 7-10 yrs (Friday 6.30 – 8.00) JTC Girls 10-13 yrs (Mon 7.15 – 8.30) JTC Lads (Fri 6.30 – 8.00pm)	Do not support these organisations
	St Pauls Methodist 63 rd Shaw	Activities: Various from arts to camping Age:10–14 yrs Rainbow Unit – Tuesday Brownie Unit – Tuesday Guide Unit – Thursday	Do not support these organisations
	St Marys 14 th Oldham Higher Crompton	Activities: Various from arts to camping Age:10-14 yrs Brownie Unit – Tuesday Guide Unit – Tuesday Rainbow Unit – Monday	Do not support these organisations
	Shore Edge,7 th Oldham Shaw	Activities: Various from arts to camping Age:10-14 yrs Guides Thursday Brownie Monday Rainbow Tuesday	Do not support these organisations
	Shore Edge 72 nd Oldham Shaw	Rainbow Unit –Wednesday Brownie Unit – Monday	Do not support these organisations
	Boys and Girls Brigade, Shaw Holy Trinity	Activities: Outdoor skills Age:11–17 yrs	Do not support these organisations
	St Josephs 44 th Oldham Shaw	Brownie Unit – Thursday Guide Unit – Tuesday	Do not support these organisations
	St Annes 40 th Oldham	Brownie Unit – Monday	Do not support these organisations
	St Aidans & Oswald 6 th Oldham	Rainbow Unit – Thursday Brownie Unit – Tuesday Guide Unit – Monday	Do not support these organisations

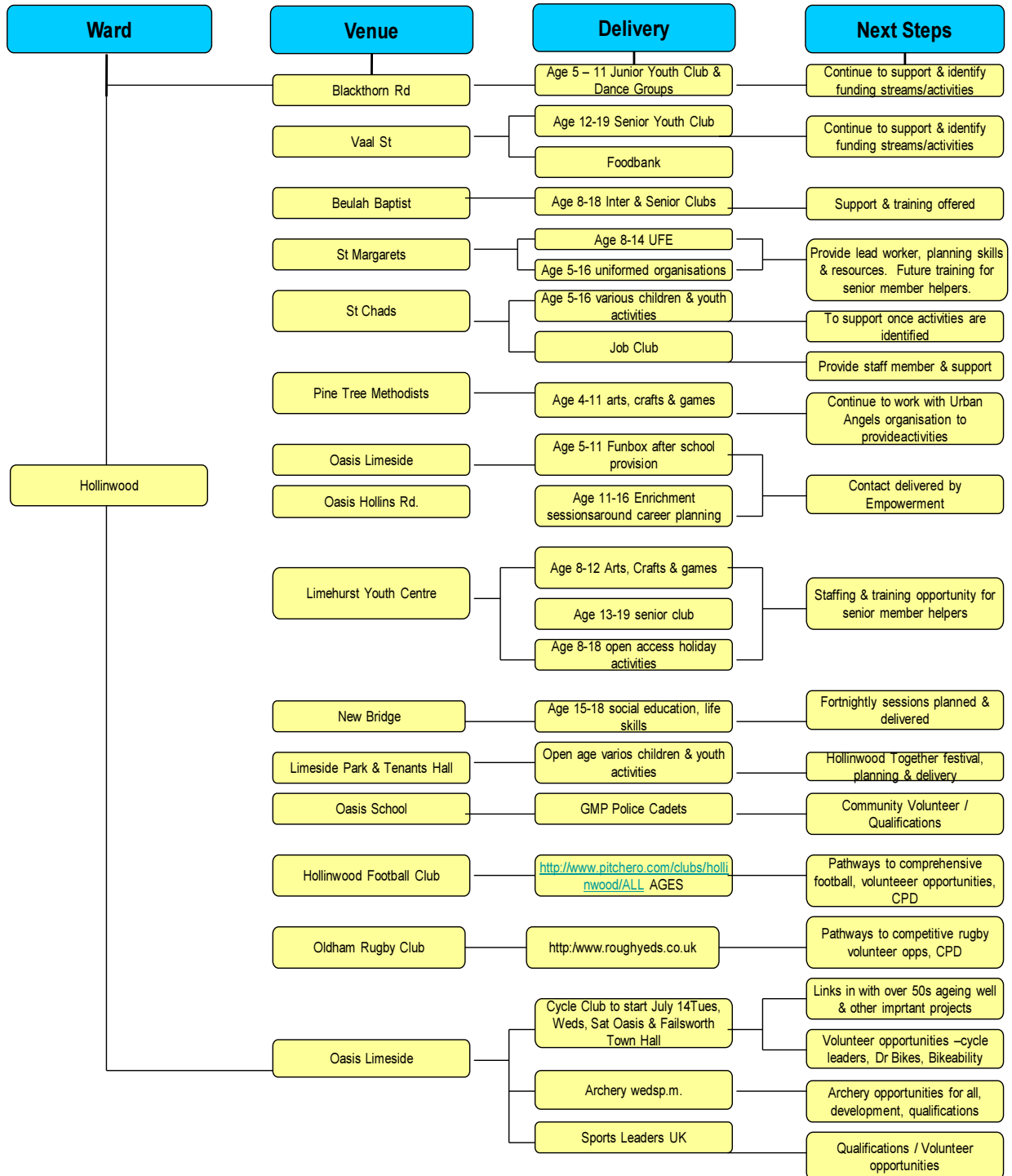
Youth & Sport – Royton (DRAFT)
The Co-operative Vision

Ward	Venue	Delivery	Next Steps
Royton	The Oldham Academy North	Street Dance Aged 7+	Sports Development led
		Disability Multi Sports Age 11+	Sports Development led
		Multi Sports Holiday camps Age 8–16 yrs	Sports Development led
		FC Santos - Football Club Boys and Girls Age 4–7 yrs	Continue to support as and when needed
		Netball in the Community Age 5–14 yrs	
	Royton Cricket Club	Royton Cricket Club Age 7+	Continue to support as and when needed
		Royton Tennis Club	Continue to support as and when needed
	Royton Youth Centre	Autism Junior Club 7-12 yrs (Monday 6-8.30pm)	Supporting group. Provide resources and building
		Junior Ability group 5-12 yrs (Tuesday 4-6pm)	Core provision Staff YS
		Youth Forum 11-17 yrs (1st Tuesday of month)	Core provision Staff YS
		Senior Youth Club 12-18 yrs (Tuesdays 6.15-8.45pm)	Core provision Staff YS
		Craft Group –Adults with disabilities Life long learning provision (Tues 9.30am-11.30)	Building- Resources- 1 Staff member
		Yoga Adults Community Group (Wednesdays 9.30am-11.30am)	Building- Resources- 1 Staff member
		Dimensions Dance Group 11-16 yrs (Wednesday 5.30-8pm)	Building- Resources- 1 Staff member
		Work Club (Thursday 12-2pm) Adults	3 YS staff
		Senior ability Group (Thursday 4-6pm)	Core Provision Staff YS
		Senior Autism YC 13-18 yrs (Thursday 6-8.30pm)	Building Resources
		Junior YC 8-12 yrs (Fridays 4-6pm)	Core provision Staff YC
		Senior YC 13-18 yrs (Fridays 6.15-8.45pm)	Core provision Staff YC
		Holiday provision 8-18 yrs Half term summer	Core provision Staff YC
		Royton Youth Centre	Drop in Session 11-16 yrs (Wednesdays 12.30-1.30pm)

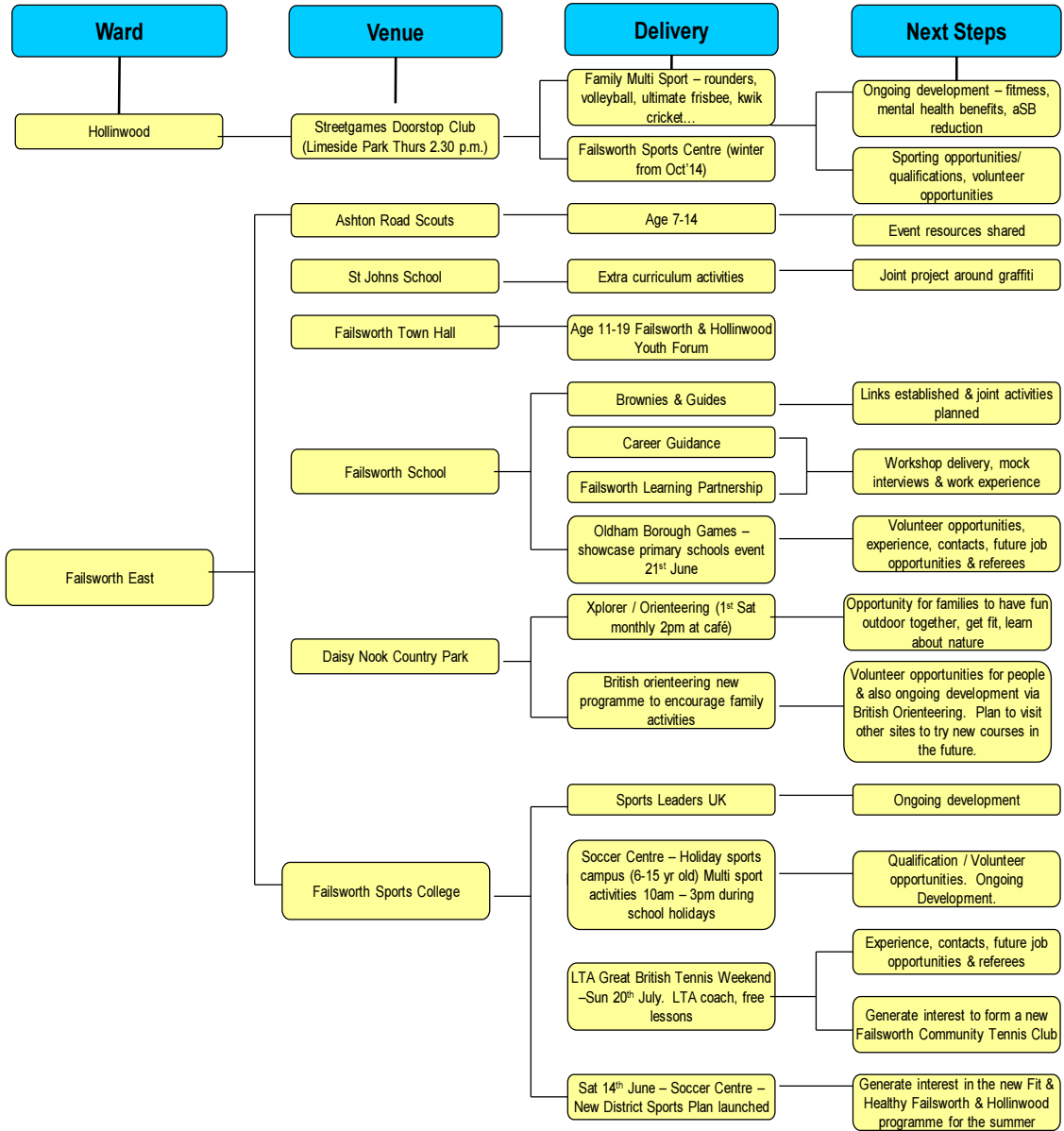
Youth & Sport – Royton Continuation (DRAFT)
The Co-operative Vision

Ward	Venue	Delivery	Next Steps
Royton	Scouts, Cubs & Beavers - 1 st Royton, Trinity Methodist, Radcliffe St, Royton	Activities: Various from arts to camping Age: Beavers 6–8 yrs, Cubs 8–10.5 yrs, Scouts 10.5–14 yrs	Do not support these organisations
	Scouts, Cubs & Beavers - 2 nd Royton Currently at Tandle Hill Park, Royton	Activities: Various from arts to camping Age: Beavers 6–8 yrs, Cubs 8–10.5 yrs, Scouts 10.5–14 yrs	Do not support these organisations
	Scouts, Cubs & Beavers - 3 rd Royton Scout Hut, Old Edge Lane, Royton	Activities: Various from arts to camping Age: Beavers 6–8 yrs, Cubs 8–10.5 yrs, Scouts 10.5–14 yrs	Do not support these organisations
	Scouts, Cubs & Beavers - 4 th Royton, Thornham St James, Thornham Lane, Royton	Activities: Various from arts to camping Age: Beavers 6–8 yrs, Cubs 8–10.5 yrs, Scouts 10.5–14 yrs	Do not support these organisations
	Scouts, Cubs & Beavers - 6 th Royton, Scout hut by side of Downey House, Royton	Activities: Various from arts to camping Age: Beavers 6–8 yrs, Cubs 8–10.5 yrs, Scouts 10.5–14 yrs	Do not support these organisations
	St Pauls Church, Royton, Brownies	Activities: Arts, Crafts, dance & life skills Age: 7-10 yrs	Do not support these organisations
	St Pauls Church 4 th Oldham, Royton	Activities: Arts Crafts dance & life skills Age: 5-7 yrs Brownie Unit – Tuesday Rainbow Unit – Tuesday Guide Unit – Tuesday	Do not support these organisations
	St Pauls Church, 74 th	Activities: Arts, Crafts, dance & life skills Age: 10-14 yrs Brownie Unit – Tuesday	Do not support these organisations
	Beaver & Scouts, St Pauls Church, Royton	Activities: Arts, Crafts, dance & life skills Age: Beavers 6–8 yrs, Scouts 10.5-14 yrs	Do not support these organisations
	Air Cadets 1855 Royton Squadron, Park lane, Royton	Activities: shooting training, flying , drill, music & adventure Age: 13–17 yrs	Do not support these organisations
	Scout Explorer Unit – Royton, Trinity Methodist, Radcliffe St, Royton	Activities: Various from arts to camping Age: 14–26 yrs	Do not support these organisations
	Rainbows, Brownies and Beavers, Thornham St James, Royton	Activities: Various from arts to camping Age: 5–7 yrs, 7–10 yrs	Do not support these organisations
	St Annes 46 th Oldham - Royton	Rainbow Unit Brownie Unit – Tues Guide Unit – Mon	Do not support these organisations
	Trinity Methodist 11 th Oldham, Royton	Brownie Unit - Tuesday	Do not support these organisations
	Trinity Methodist 24 th Oldham, Royton	Rainbow Unit – Thursday Brownie Unit - Thursday Guide Unit – Thursday Royton District Senior section Unit Mondays	Do not support these organisations

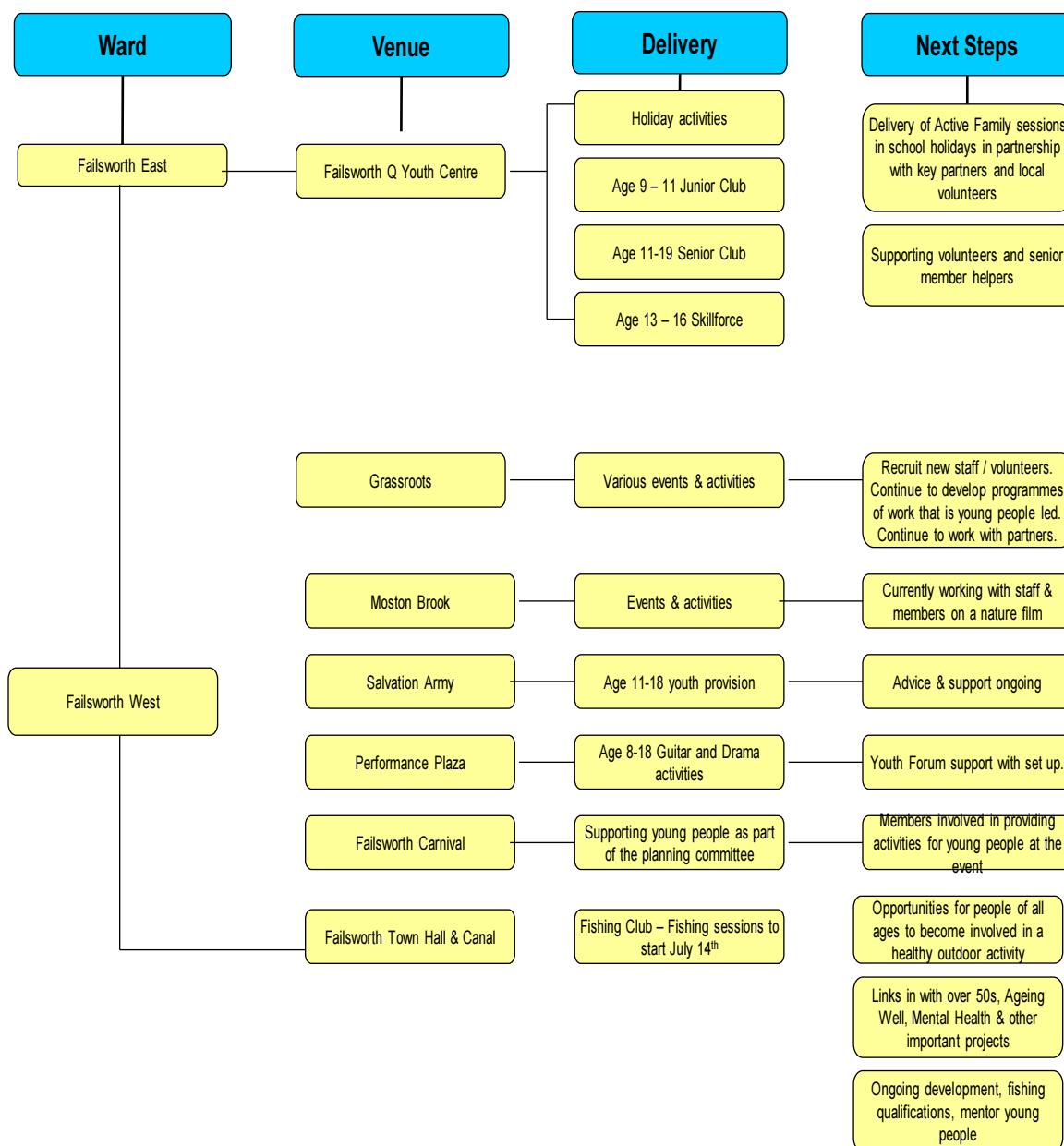
Failsworth & Hollinwood Sport Offer 2014



Failsworth & Hollinwood Sport Offer 2014



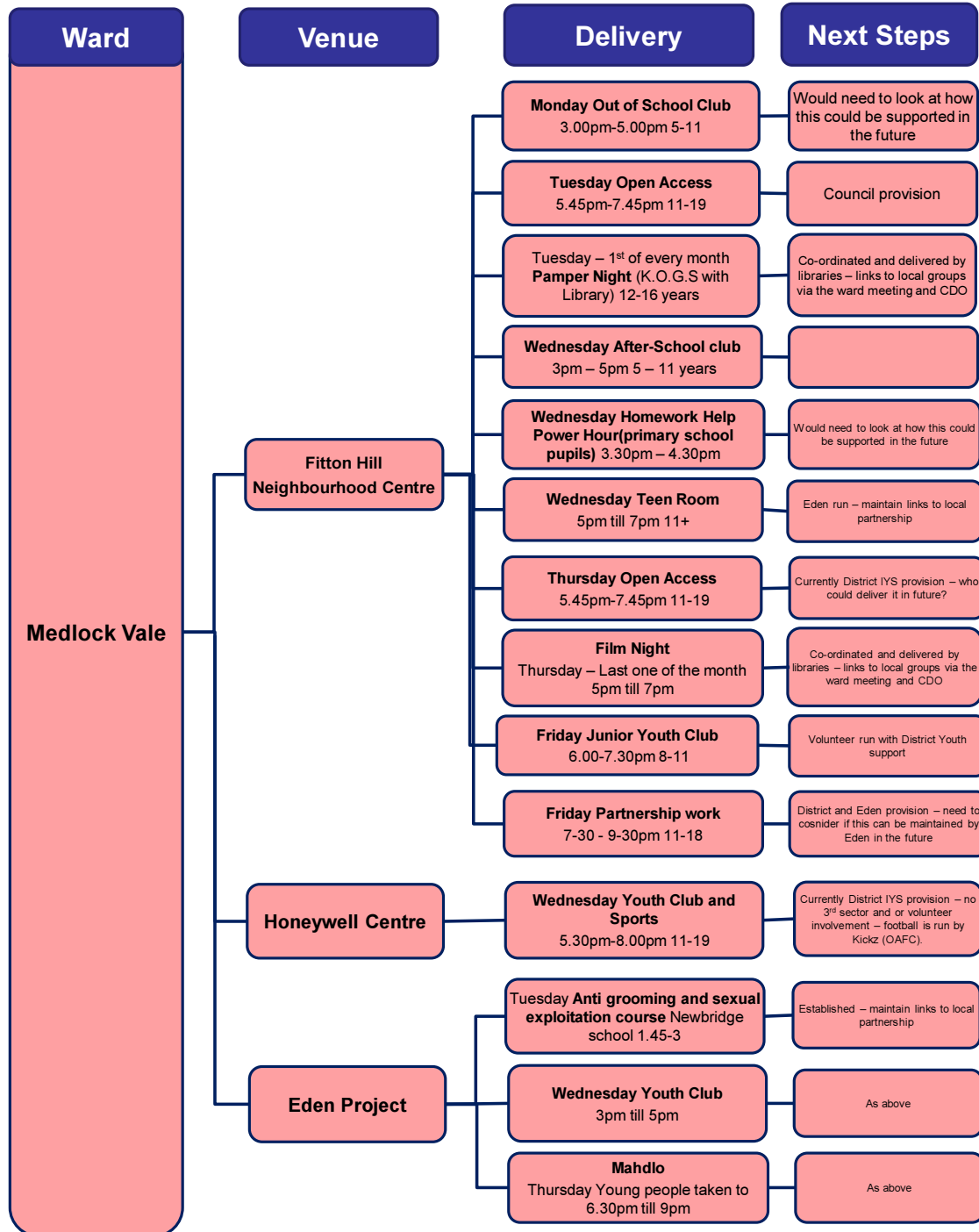
Failsworth & Hollinwood Sport Offer 2014



Youth & Sport Alexandra and Coldhurst (DRAFT)
The Co-operative Vision

Ward	Venue	Delivery	Next Steps
Alexandra	Full Circle at the Arc	Junior Youth Club (8-12 years), Friday 5.30pm - 7pm	Full Circle don't require any detailed support to access funding – they do need to be linked into the local youth 'network'
		Junior Youth Club (8-12 years), Saturday 10am - 11.30am	As above
	ACCT - Community House	Laughs and Crafts 12pm till 2pm – Saturday adults must accompany children	A Community Builder supported project – don't require detailed support, but link closely with CDO
	Brownedge Road, Children's Society	The Children's Art Club 10am till 12.30pm	Volunteer run and managed activity – may need support now and again to access funds for resources – links to CDO
	Youth Bus	Friday Open Access 5.00pm-7.00pm 11-19 Warren Lane, Alt	Council provision that may cease?
Coldhurst	Youth Bus	Monday Open Access 5.00pm-8.00pm 11-19 Lay-by near the Millennium Centre	As above
	WCWA	Thursday - Cooking session for kids 4.00 pm to 5.30 pm	Established local organization that access funds from various external sources
	Robin Hill	Tuesday Open Access 5.00pm-7.30pm 11-19	Council provision
		Thursday Open Access 5.00pm-7.30pm 11-19	Council provision
		Friday Junior Youth Club 6.00-7.30pm 8-11	Council provision
	OBA Millennium Centre	Tuesday Football - Outta Skool 6.00 pm to 8.00 pm	Established local organization that access funds from various external sources
		Saturday - Kids football - Outta skool 1.00 pm to 2.00 pm	Established local organization that access funds from various external sources
		Sunday - Exercise classes Outta skool - £1.50 10 am to 11 am	Established local organization that access funds from various external sources
	WCWA	Thursday - Cooking session for kids 4.00 pm to 5.30 pm	Established local organization that access funds from various external sources
	Barnados Asha Project		Independent National charity – struggling with financing so have stopped youth activity.
	Vision	Open Access Monday – 3:30 – 6:00pm Wednesday – 3:30 – 6:00pm Friday – 3:30 – 6:00pm Weekends – 12:00 – 4:00pm	Established local organization that access funds from various external sources

Youth & Sport – Medlock Vale (DRAFT)
The Co-operative Vision



Youth & Sport – St James (DRAFT)
The Co-operative Vision

Ward	Venue	Delivery	Next Steps
ST JAMES	East Oldham Methodist Church Hall	Spotlight Theatre Drama club for young people aged 8-19 . Fridays 6.30 – 8pm	Further support for funding towards developing a working stage
		Rainbows & Brownies. Ages 5-10. Wednesdays 6pm onwards.	
	Sholver Youth Centre	Youth club Mon , Tues, Thurs 6.15 -8.30pm Junior Youth Club Fri 4.30 – 6pm	Council provision
		Open access in school holidays. Mon & Wed 12-2pm	Council provision
	Moorside Cricket & Bowling Club	Cricket young people aged 6-18	Support in rebuild of pavilion. Support in asset transfer of Council land.
	Stoneleigh Cabin	Football & craft for young people. Fridays 6-8pm.	Football delivered by Kickz (OACT). Craft and other activities via FOSP – established local organisation that access funds from various sources
	1 Yates St	Oldham Sea Cadets. Mondays & Thursdays 7.15 – 9.30. For young people aged 10 – 18.	
	Fulwood Nature Reserve	Moorside Juniors FC Under 12s. Train on football pitch at Fulwood	
	St James Church Hall	Pennine Cascades Dance Troupe for young people aged 2 +. Every Wednesday 6-10pm	
		Oldham Royelles Dance Troupe , ages 0-20. Tuesday 12+ - 7-9pm Wed under 12s - 6-8pm	
	Oldham Community Sports Club (Pollards)		Issues in recent times with governance of club. Support offered with development & refurbishment of venue
	St Thomas Church Hall	Rainbows & Brownies Monday 6.30 onwards. Ages 5-10	
		Bell ringing. From 11 years. Mondays 7.30 – 8.30pm.	

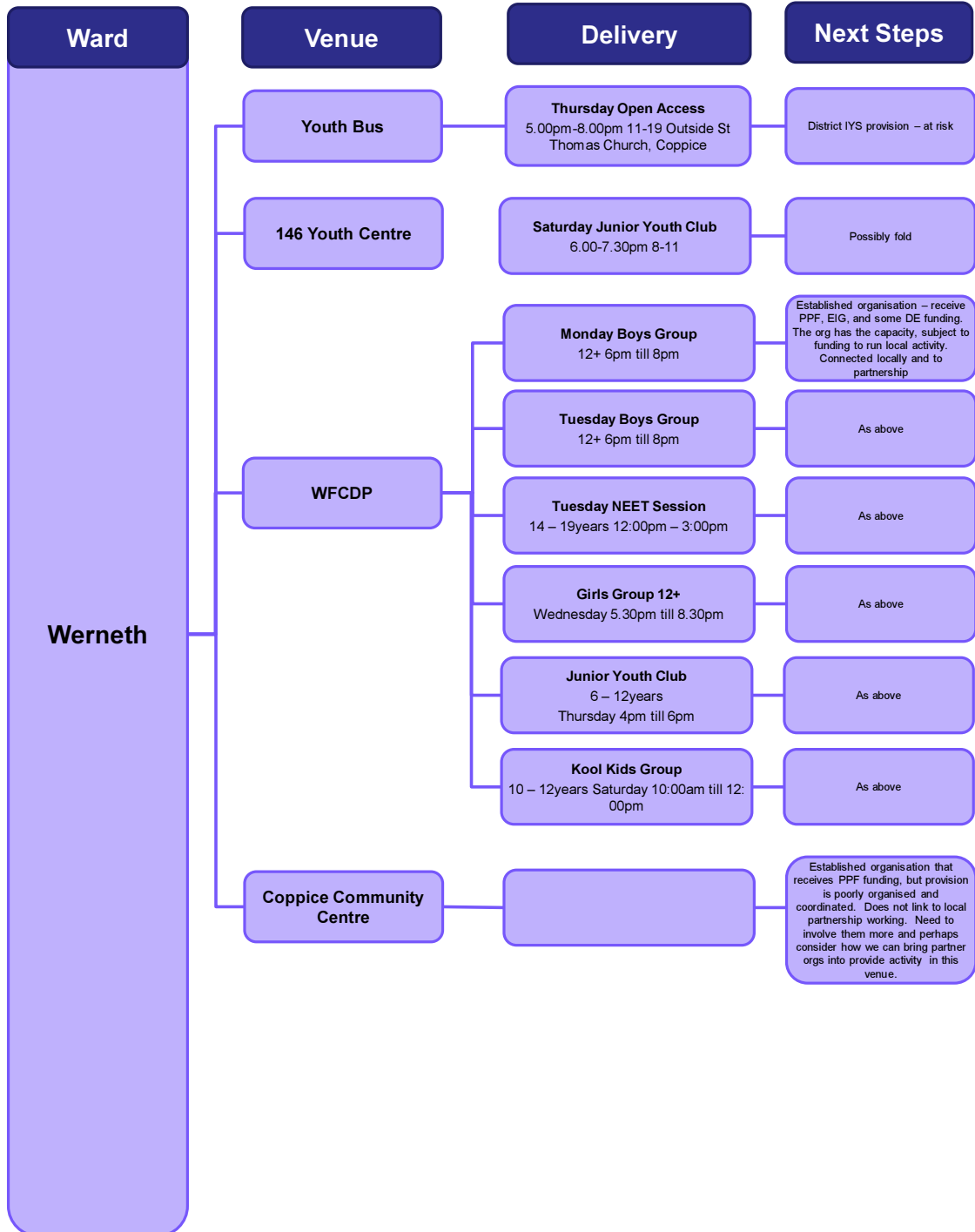
Youth & Sport St Marys(DRAFT)
The Co-operative Vision

Ward	Venue	Delivery	Next Steps	
ST MARYS	MAHDLO	Variety of activities for young people aged 8- 21. 7 days a week , 52 weeks a year.	Established charity delivering a wide range of activities	
	Fatima Women's Association	Girls Groups – ages 5/6-18 Friday 5-8pm Saturday 1.30 – 4.30pm	Currently receives PPF funding. Support with funding and / or support to access sources of funding other than Council.	
	Glodwick Pool	Swimming lessons, Swimming for all ages. Gym.	Support with developing membership and asset transfer of pool	
	Higginshaw Community project	Higginshaw ARLFC	Rugby. Young people ranging from under 7	Established local organization that access funds from various external sources
		Higginshaw Thai Boxing	Monday 6.30 -8pm Wed 6.30 – 8pm Thurs 6.30 – 8pm	Has received community chest funding. Is supported by HCP
		New Generation Dance troupe.	Wednesdays 6.30 – 9.30pm. Various ages up to 18.	
		83rd Oldham cubs	Tuesday 7-8.30pm	Support club development and access to funding for various projects.
	Oldham St Annes ARLFC	Rugby young people aged 8-18.		
	HVRA	Youth Club 5-6.30pm		
	Baden – Powell Centre	Cubs 8-10 years old Friday 7-8.30	Conversation with cubs/ scouts re wider community use of the B-P centre	
Oldham Sports Centre (moving in the future)	wide range of sports and exercise related activities.			

Youth & Sport Waterhead (DRAFT)
The Co-operative Vision

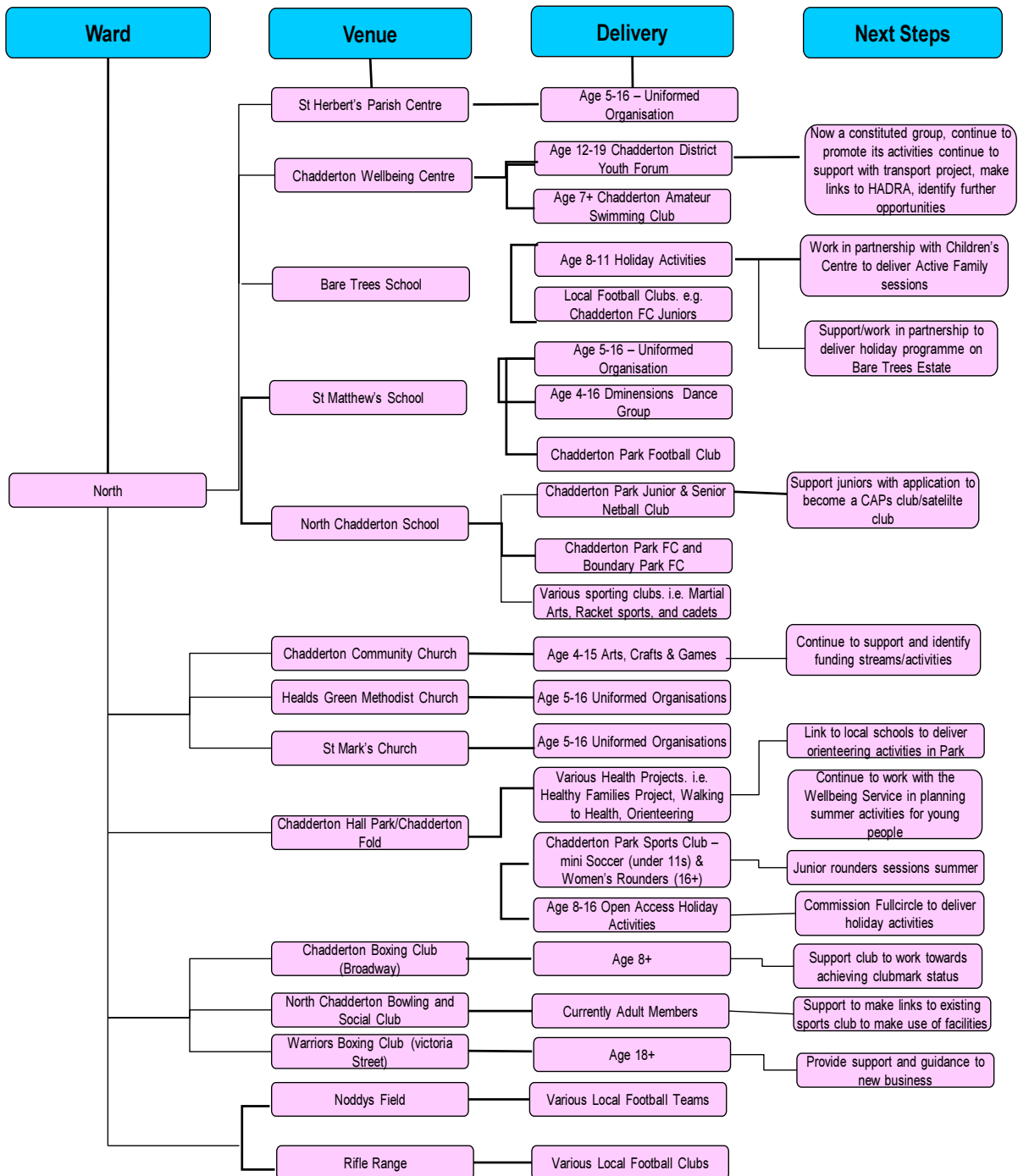
Ward	Venue	Delivery	Next Steps
WATERHEAD	Greenacres Community Centre	Caroline's School of Dance. Tues 4-7.30 / Thurs 4.15 – 8pm Friday 4-5pm (Ages 8-18)	
		Thai Kwon Do Tuesday / Thursday 7.30 – 9pm	
		OPAG First Wed of every month – cooking classes. 9 - 12	Continue to support OPAG to access funding & develop new projects.
		Pop Up Cinema.- Various days / times.	.Continue to publicise and support BIG Local
		Keep Fit First Saturday of month . open to all. 11-12pm. Free	
		Arts and Crafts Second Saturday of month all age. 11.30 – 1pm.	
	40 Wellyholes St Air Training Corps (2200 Squadron)	Activities & training for young people aged 13-17 . Mon & Wed 7-9.30pm	
	Elim Foursquare Church Hall	4 square kids club 5.30 -7.00pm Thursday	
	St Barnabas Church Hall	Beavers 6pm Monday Cubs 6.30 pm Monday Scouts 7.00pm Monday	
		Tuesday Rainbows & Brownies 6-7.30pm Guides 6-7.30pm	
		Youth Club. Fridays 6-7.30pm. young people aged 7-12	
	Waterhead Rugby Club	Rugby 6-18 year olds	
	Waterhead Academy	Oldham Phoenix Basketball Club. Aged 11-18. Wednesday 7-8pm.	Support club development & access to funding
	Waterhead Park	Free activities Thursday, 4.30 – 6pm run by OPAG. (During school holidays time will be 1-3pm)	OPAG currently receives PPF funding for this work , support with identifying other sources of funding.
	Holy Trinity Church Hall	Insync Dance Troupe Wednesday 6-9pm	
		Beavers Monday 6-7.15pm Cubs , Monday 6.30 -8pm	
		Youth Club with OPAG Friday 6-7.30pm.	
		Thursday Rainbows & Brownies 6-7.30pm Guides 6-7.30pm	
	Clarksfield School Pitch	Pitch is used informally by young people in the area. Occasional formal sessions/ football tournaments.	Support school in developing a management committee

Youth & Sport Werneth (DRAFT)
The Co-operative Vision



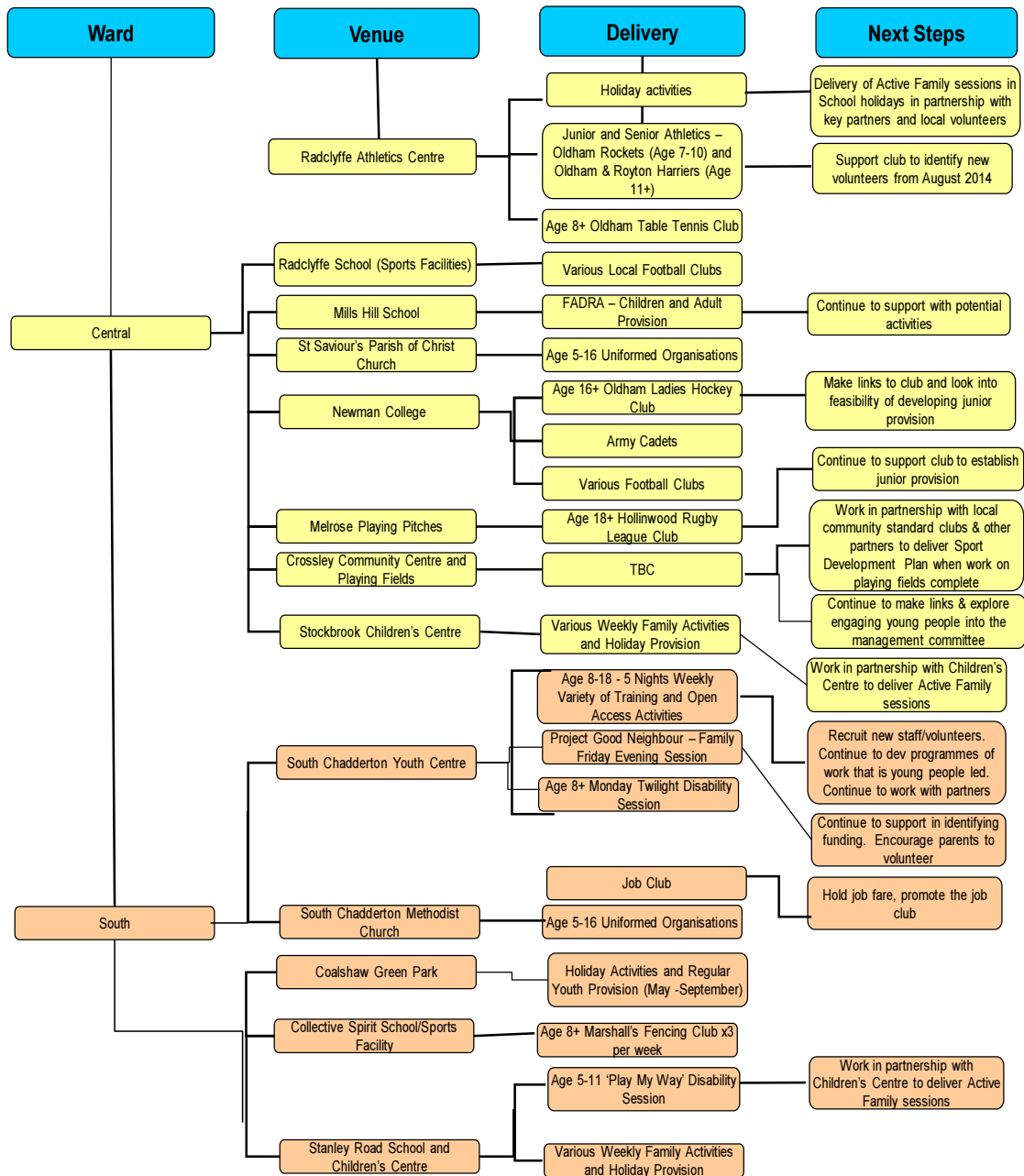
Youth & Sport North Ward

The Co-operative Vision



Youth & Sport – Central and South Wards

The Co-operative Vision



Youth & Sport Provision
Saddleworth and Lees
 The Co-operative Vision

